



B15T-7 / B18T-7 / B18TL-7 / B20T-7 / B20TL-7
B16X-7 / B18X-7 / B20X-7

7-SERIES FORKLIFTS

Electric 1.5 to 2.0 ton capacity 3 & 4 Wheel



Technical Data according to VDI 2198

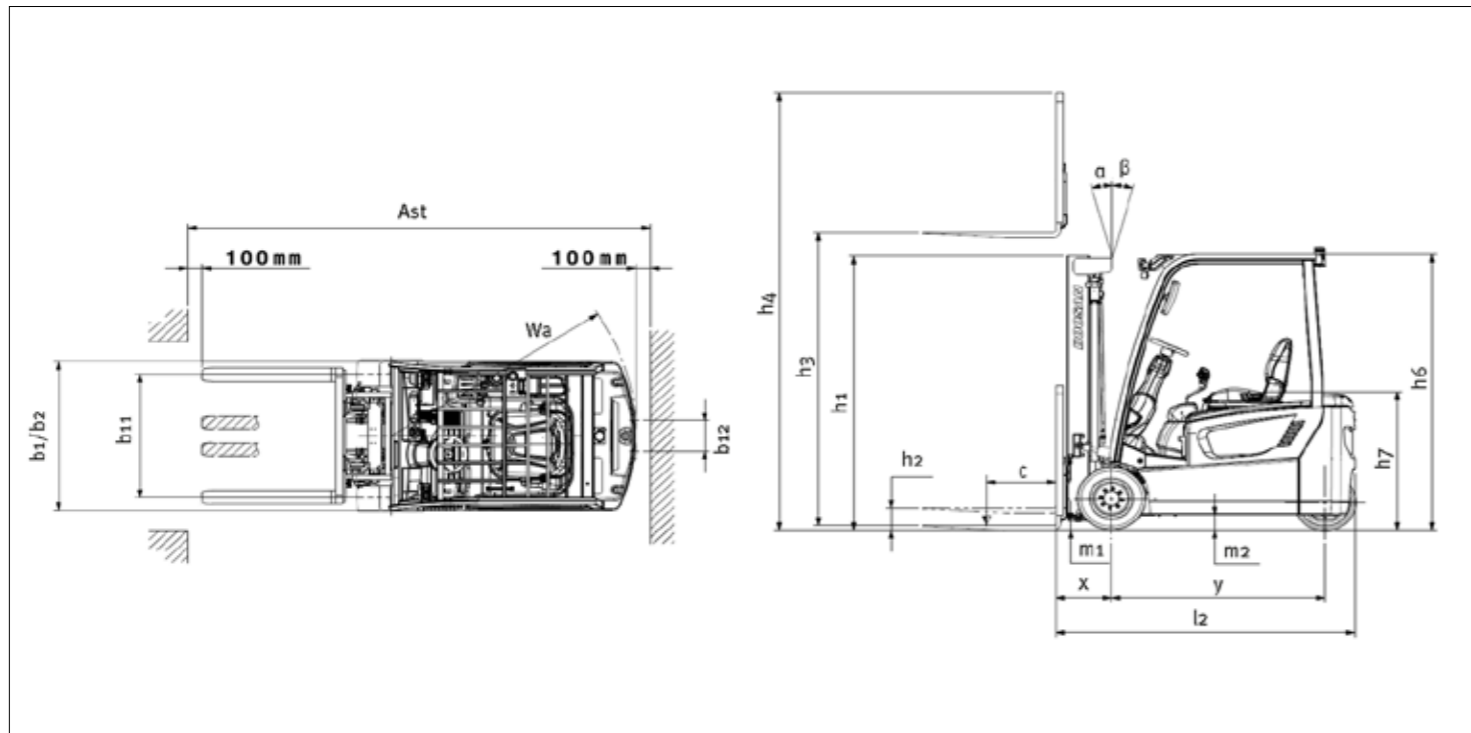
CHARACTERISTICS	1.1	Manufacturer			Doosan	Doosan
	1.2	Model			B15T-7	B18T-7
	1.3	Drive			AC Electric	AC Electric
	1.4	Operator Type			Driver Seated	Driver Seated
	1.5	Load Capacity/rated load	Q	kg	1,500	1,750
	1.6	Load Center	c	mm	500	500
	1.8	Load Distance, center of drive axle to fork	x	mm	376	376
	1.9	Wheelbase	y	mm	1,323	1,423
	WEIGHT	2.1	Service Weight (with min. weight of battery)		kg	3,028
2.2		Axle loading, loaded, front/rear		kg	3,988/540	4,358/534
2.3		Axle loading, unloaded, front/rear		kg	1,495/1,533	1,530/1,612
TYRES	3.1	Tyres: pneumatic (P). solid (E), cushion (C)			E/C	E/C
	3.2	Tyre size. Front			18x7-8 (1)	18x7-8 (1)
	3.3	Tyre size. Rear			15x4.5-8 (2)	15x4.5-8 (2)
	3.5	Wheels. number Front/Rear (x = driven wheels)			2x/2	2x/2
	3.6	Tread. Front	b11	mm	902	902
	3.7	Tread. Rear	b12	mm	167	167
	DIMENSIONS	4.1	Tilt of Mast/Fork carriage Forward/Backward	α/β	°	5/7
4.2		Height. Mast lowered	h1	mm	2,150	2,150
4.3		Free Lift	h2	mm	130	130
4.4		Lift Height	h3	mm	3,300	3,300
4.5		Height. Mast Extended	h4	mm	4,345	4,345
4.7		Height of Overhead Guard (Cabin)	h6	mm	2,010	2,010
4.8		Height of Seat	h7	mm	919	919
4.19		Overall Length	l1	mm	2,791	2,891
4.20		Length to Forkface	l2	mm	1,891	1,991
4.21		Overall Width	b1/b2	mm	1,090	1,090
4.22		Fork Dimensions	s/e/l	mm	35 x 100 x 900	35 x 100 x 900
4.23		Fork carriage ISO 2328. class			II	II
4.24		Fork carriage width	b3	mm	973	973
4.31		Ground Clearance. loaded. below mast	m1	mm	86	86
4.32		Ground Clearance. center of wheelbase	m2	mm	100	100
4.33		Aisle width for pallets 1.000 x 1.200 crossways	Ast	mm	3,216	3,316
4.34	Aisle width for pallets 800 x 1.200 lengthways	Ast	mm	3,341	3,441	
4.35	External Turning Radius	Wa	mm	1,515	1,615	
4.36	Internal Turning Radius	b13	mm	-	-	
PERFORMANCE DATA	5.1	Travel Speed. loaded/unloaded		km/h	17/17	17/17
	5.2	Lift Speed. loaded/unloaded		m/s	0.4/0.6	0.4/0.6
	5.3	Lowering Speed. loaded/unloaded		m/s	0.50/0.45	0.50/0.45
	5.6	Max. Drawbar pull. loaded		N	12,749	12,749
	5.8	Max. Gradeability. loaded		%	26/	25/
	5.10	Service Brake			hydraulic	hydraulic
ELECTRIC ENGINE	6.1	Drive motor S2 60 min		kW	6.0 x 2	6.0 x 2
	6.2	Lift motor rating at S3 15%		kW	14	14
	6.3	Battery Compartment		mm	528 x 992 x 698	638 x 992 x 698
	6.4	Battery voltage, nominal capacity K5		V/Ah	48/440	48/510
	6.5	Battery weight		kg	700	800
ADDITION DATA	8.1	Type of drive control			MOSFET Inverter	MOSFET Inverter
	8.2	Operating pressure for attachments		bar	140	140

Doosan	Doosan	Doosan	Doosan	Doosan	Doosan
B18TL-7	B20T-7	B20TL-7	B16X-7	B18X-7	B20X-7
AC Electric	AC Electric	AC Electric	AC Electric	AC Electric	AC Electric
Driver Seated	Driver Seated	Driver Seated	Driver Seated	Driver Seated	Driver Seated
1,750	2,000	2,000	1,600	1,800	2,000
500	500	500	500	500	500
376	381	381	376	376	381
1,554	1,446	1,554	1,495	1,495	1,495
3,333	3,472	3,333	3,189	3,281	3,461
4,372/712	4,841/631	4,769/564	4,235/553	4,551/530	4,871/590
1,635/1,698	1,623/1,849	1,635/1,698	1,689/1,491	1,696/1,585	1,692/1,769
E/C	E/C	E/C	P/E	E	E
18x7-8 (1)	200x50-10 (1)	200x50-10 (1)	18x7-8 (3)	200x50-10	200x50-10
15x4.5-8 (2)	16x6-8 (2)	16x6-8 (2)	16x6-8 (2)	16x6-8	16x6-8
2x/2	2x/2	2x/2	2x/2	2x/2	2x/2
902	912	912	902	912	912
167	201	201	890	890	890
5/7	5/7	5/7	5/7	5/7	5/7
2,150	2,150	2,150	2,150	2,150	2,150
130	135	135	130	130	135
3,300	3,300	3,300	3,300	3,300	3,300
4,345	4,350	4,350	4,345	4,345	4,350
2,010	2,010	2,010	2,010	2,010	2,010
919	919	919	919	919	919
3,032	2,929	3,037	3,020	3,020	3,025
2,132	2,029	2,137	2,120	2,120	2,125
1,090	1,119	1,119	1,090	1,119	1,119
35 x 100 x 900	40 x 100 x 900	40 x 100 x 900	35 x 100 x 900	35 x 100 x 900	40 x 100 x 900
II	II	II	II	II	II
973	973	973	973	973	973
86	86	86	86	86	86
100	100	100	100	100	100
3,457	3,354	3,462	3,466	3,466	3,471
3,582	3,479	3,587	3,665	3,665	3,670
1,756	1,648	1,756	1,886	1,886	1,886
-	-	-	494	496	496
17/17	17/17	17/17	17/17	17/17	17/17
0.4/0.6	0.4/0.6	0.4/0.6	0.4/0.6	0.4/0.6	0.4/0.6
0.50/0.45	0.50/0.45	0.50/0.45	0.50/0.45	0.50/0.45	0.50/0.45
12,749	12,749	12,749	12,749	12,749	12,749
25/	24/	24/	26/	25/	24/
hydraulic	hydraulic	hydraulic	hydraulic	hydraulic	hydraulic
6.0 x 2	6.0 x 2	6.0 x 2	6.0 x 2	6.0 x 2	6.0 x 2
14	14	14	14	14	14
746 x 992 x 698	638x 992 x 698	746 x 992 x 698	638 x 992 x 698	638 x 992 x 698	638 x 992 x 698
48/600	48/585	48/600	48/585	48/585	48/585
1,000	1,000	1,000	1,050	1,050	1,050
MOSFET Inverter	MOSFET Inverter	MOSFET Inverter	MOSFET Inverter	MOSFET Inverter	MOSFET Inverter
140	140	140	140	140	140

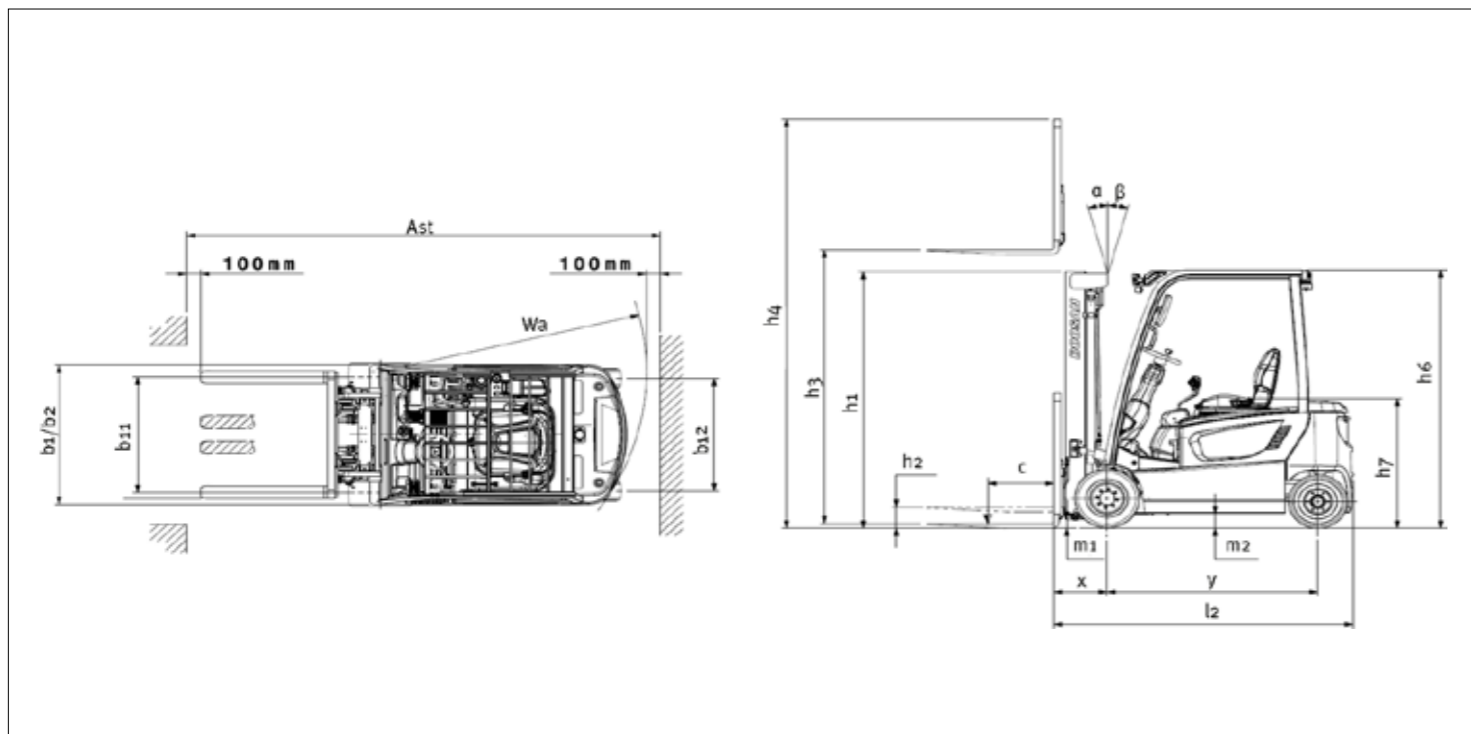
Note: Specification values quoted in this specification sheet have been rounded. Performance may vary depending on operating conditions. Products and specifications are subject to improvement and change without prior notice.

(1) optional: cushion Tyres 18x7 - 12.12
 (2) optional: cushion Tyres 15 x 6 - 11.25
 (3) optional: pneumatic Tyres

DIMENSIONAL DRAWING - 3-wheel



DIMENSIONAL DRAWING - 4-wheel



MAST SPECIFICATIONS and RATED CAPACITIES

B15T-7

Mast type	Maximum Fork Height	Fully Lowered Height	Fully Extended Height		Free Lift		Rated Load Capacities					
			with Load Backrest	without Load Backrest	with Load Backrest	without Load Backrest	Single Solid Tire			Single Cushion Tire		
							Tilt Angle		Load Cap.	Tilt Angle		Load Cap.
							FWD	BWD		LC 500mm	FWD	
mm	mm	mm	mm	mm	mm	deg	deg	kg	deg	deg	kg	
STD	3,000	2,000	4,045	3,600	130	130	5	7	1,500	5	7	1,500
	3,300	2,150	4,345	3,900	130	130	5	7	1,500	5	7	1,500
	3,500	2,250	4,545	4,100	130	130	5	7	1,500	5	7	1,500
	3,700	2,350	4,745	4,300	130	130	5	7	1,500	5	7	1,500
	4,000	2,550	5,045	4,600	130	130	5	7	1,500	5	7	1,500
4,500	2,800	5,545	5,100	130	130	5	7	1,425	5	7	1,450	
FF	2,700	1,850	3,745	3,325	845	1,265	5	5	1,500	5	5	1,500
	3,000	2,000	4,045	3,625	995	1,415	5	5	1,500	5	5	1,500
	3,300	2,150	4,345	3,925	1,145	1,565	5	5	1,500	5	5	1,500
FFT	4,000	1,880	5,050	4,630	875	1,295	5	5	1,450	5	5	1,475
	4,500	2,045	5,545	5,125	1,040	1,460	5	5	1,400	5	5	1,425
	4,750	2,130	5,795	5,375	1,125	1,545	5	5	1,350	5	5	1,375
	5,000	2,245	6,045	5,625	1,240	1,660	5	5	1,300	5	5	1,350
	5,500	2,480	6,550	6,130	1,475	1,895	5	5	975	5	5	1,275
	6,000	2,645	7,045	6,625	1,640	2,060	5	5	650	5	5	1,225

B18T-7, B18TL-7

Mast type	Maximum Fork Height	Fully Lowered Height	Fully Extended Height		Free Lift		Rated Load Capacities					
			with Load Backrest	without Load Backrest	with Load Backrest	without Load Backrest	Single Solid Tire			Single Cushion Tire		
							Tilt Angle		Load Cap.	Tilt Angle		Load Cap.
							FWD	BWD		LC 500mm	FWD	
mm	mm	mm	mm	mm	mm	deg	deg	kg	deg	deg	kg	
STD	3,000	2,000	4,045	3,600	130	130	5	7	1,750	5	7	1,750
	3,300	2,150	4,345	3,900	130	130	5	7	1,750	5	7	1,750
	3,500	2,250	4,545	4,100	130	130	5	7	1,750	5	7	1,750
	3,700	2,350	4,745	4,300	130	130	5	7	1,750	5	7	1,750
	4,000	2,550	5,045	4,600	130	130	5	7	1,750	5	7	1,750
4,500	2,800	5,545	5,100	130	130	5	7	1,650	5	7	1,650	
FF	2,700	1,850	3,745	3,325	845	1,265	5	5	1,750	5	5	1,750
	3,000	2,000	4,045	3,625	995	1,415	5	5	1,750	5	5	1,750
	3,300	2,150	4,345	3,925	1,145	1,565	5	5	1,750	5	5	1,750
FFT	4,000	1,880	5,050	4,630	875	1,295	5	5	1,675	5	5	1,700
	4,500	2,045	5,545	5,125	1,040	1,460	5	5	1,600	5	5	1,650
	4,750	2,130	5,795	5,375	1,125	1,545	5	5	1,525	5	5	1,625
	5,000	2,245	6,045	5,625	1,240	1,660	5	5	1,400	5	5	1,575
	5,500	2,480	6,550	6,130	1,475	1,895	5	5	1,025	5	5	1,500
	6,000	2,645	7,045	6,625	1,640	2,060	5	5	700	5	5	1,400

B20T-7, B20TL-7

Mast type	Maximum Fork Height	Fully Lowered Height	Fully Extended Height		Free Lift		Rated Load Capacities					
			with Load Backrest	without Load Backrest	with Load Backrest	without Load Backrest	Single Solid Tire			Single Cushion Tire		
							Tilt Angle		Load Cap.	Tilt Angle		Load Cap.
							FWD	BWD		LC 500mm	FWD	
mm	mm	mm	mm	mm	mm	deg	deg	kg	deg	deg	kg	
STD	3,000	2,000	4,050	3,605	135	135	5	7	2,000	5	7	2,000
	3,300	2,150	4,350	3,905	135	135	5	7	2,000	5	7	2,000
	3,500	2,250	4,550	4,105	135	135	5	7	2,000	5	7	2,000
	3,700	2,350	4,750	4,305	135	135	5	7	2,000	5	7	2,000
	4,000	2,550	5,050	4,605	135	135	5	7	2,000	5	7	2,000
4,500	2,800	5,550	5,105	135	135	5	7	1,950	5	7	2,000	
FF	2,700	1,850	3,750	3,330	845	1,265	5	5	2,000	5	5	2,000
	3,000	2,000	4,050	3,630	995	1,415	5	5	2,000	5	5	2,000
	3,300	2,150	4,350	3,930	1,145	1,565	5	5	2,000	5	5	2,000
FFT	4,000	1,880	5,055	4,635	875	1,295	5	5	1,950	5	5	2,000
	4,500	2,045	5,550	5,130	1,040	1,460	5	5	1,875	5	5	1,975
	4,750	2,130	5,800	5,380	1,125	1,545	5	5	1,825	5	5	1,925
	5,000	2,245	6,050	5,630	1,240	1,660	5	5	1,800	5	5	1,900
	5,500	2,480	6,555	6,135	1,475	1,895	5	5	1,700	5	5	1,800
	6,000	2,645	7,050	6,630	1,640	2,060	5	5	1,575	5	5	1,500

Note: These load capacities are based on the standard chassis without side shifter.

Specification values quoted in this catalog have been rounded.
 Products and specifications are subject to improvement and change without notice.
 Performance may vary due to operating conditions.
 The performance shown represents nominal values obtained under typical operating conditions.



B16X-7

Mast type	Maximum Fork Height	Fully Lowered Height	Fully Extended Height		Free Lift		Rated Load Capacities					
			with Load Backrest	without Load Backrest	with Load Backrest	without Load Backrest	Single Solid Tire			Single Pneumatic Tire		
							Tilt Angle		Load Cap.	Tilt Angle		Load Cap.
							FWD	BWD	LC 500mm	FWD	BWD	LC 500mm
mm	mm	mm	mm	mm	mm	deg	deg	kg	deg	deg	kg	
STD	3,000	2,000	4,045	3,600	130	130	5	7	1,600	5	7	1,600
	3,300	2,150	4,345	3,900	130	130	5	7	1,600	5	7	1,600
	3,500	2,250	4,545	4,100	130	130	5	7	1,600	5	7	1,600
	3,700	2,350	4,745	4,300	130	130	5	7	1,600	5	7	1,600
	4,000	2,550	5,045	4,600	130	130	5	7	1,600	5	7	1,600
	4,500	2,800	5,545	5,100	130	130	5	7	1,600	5	7	1,600
FF	2,700	1,850	3,745	3,325	845	1,265	5	5	1,600	5	5	1,600
	3,000	2,000	4,045	3,625	995	1,415	5	5	1,600	5	5	1,600
	3,300	2,150	4,345	3,925	1,145	1,565	5	5	1,600	5	5	1,600
FFT	4,000	1,880	5,050	4,630	875	1,295	5	5	1,600	5	5	1,600
	4,500	2,045	5,545	5,125	1,040	1,460	5	5	1,550	5	5	1,525
	4,750	2,130	5,795	5,375	1,125	1,545	5	5	1,500	5	5	1,475
	5,000	2,245	6,045	5,625	1,240	1,660	5	5	1,450	5	5	1,450
	5,500	2,480	6,550	6,130	1,475	1,895	5	5	1,350	5	5	1,350
	6,000	2,645	7,045	6,625	1,640	2,060	5	5	1,250	5	5	1,075

B18X-7

Mast type	Maximum Fork Height	Fully Lowered Height	Fully Extended Height		Free Lift		Rated Load Capacities					
			with Load Backrest	without Load Backrest	with Load Backrest	without Load Backrest	Single Solid Tire			Single Pneumatic Tire		
							Tilt Angle		Load Cap.	Tilt Angle		Load Cap.
							FWD	BWD	LC 500mm	FWD	BWD	LC 500mm
mm	mm	mm	mm	mm	mm	deg	deg	kg	deg	deg	kg	
STD	3,000	2,000	4,045	3,600	130	130	5	7	1,800	n/a	n/a	n/a
	3,300	2,150	4,345	3,900	130	130	5	7	1,800			
	3,500	2,250	4,545	4,100	130	130	5	7	1,800			
	3,700	2,350	4,745	4,300	130	130	5	7	1,800			
	4,000	2,550	5,045	4,600	130	130	5	7	1,800			
	4,500	2,800	5,545	5,100	130	130	5	7	1,700			
FF	2,700	1,850	3,745	3,325	845	1,265	5	5	1,800	n/a	n/a	n/a
	3,000	2,000	4,045	3,625	995	1,415	5	5	1,800			
	3,300	2,150	4,345	3,925	1,145	1,565	5	5	1,800			
FFT	4,000	1,880	5,050	4,630	875	1,295	5	5	1,800	n/a	n/a	n/a
	4,500	2,045	5,545	5,125	1,040	1,460	5	5	1,750			
	4,750	2,130	5,795	5,375	1,125	1,545	5	5	1,600			
	5,000	2,245	6,045	5,625	1,240	1,660	5	5	1,550			
	5,500	2,480	6,550	6,130	1,475	1,895	5	5	1,475			
	6,000	2,645	7,045	6,625	1,640	2,060	5	5	1,350			

B20X-7

Mast type	Maximum Fork Height	Fully Lowered Height	Fully Extended Height		Free Lift		Rated Load Capacities					
			with Load Backrest	without Load Backrest	with Load Backrest	without Load Backrest	Single Solid Tire			Single Pneumatic Tire		
							Tilt Angle		Load Cap.	Tilt Angle		Load Cap.
							FWD	BWD	LC 500mm	FWD	BWD	LC 500mm
mm	mm	mm	mm	mm	mm	deg	deg	kg	deg	deg	kg	
STD	3,000	2,000	4,050	3,605	135	135	5	7	2,000	n/a	n/a	n/a
	3,300	2,150	4,350	3,905	135	135	5	7	2,000			
	3,500	2,250	4,550	4,105	135	135	5	7	2,000			
	3,700	2,350	4,750	4,305	135	135	5	7	2,000			
	4,000	2,550	5,050	4,605	135	135	5	7	2,000			
	4,500	2,800	5,550	5,105	135	135	5	7	1,900			
FF	2,700	1,850	3,750	3,330	845	1,265	5	5	2,000	n/a	n/a	n/a
	3,000	2,000	4,050	3,630	995	1,415	5	5	2,000			
	3,300	2,150	4,350	3,930	1,145	1,565	5	5	2,000			
FFT	4,000	1,880	5,055	4,635	875	1,295	5	5	1,900	n/a	n/a	n/a
	4,500	2,045	5,550	5,130	1,040	1,460	5	5	1,900			
	4,750	2,130	5,800	5,380	1,125	1,545	5	5	1,800			
	5,000	2,245	6,050	5,630	1,240	1,660	5	5	1,725			
	5,500	2,480	6,555	6,135	1,475	1,895	5	5	1,650			
	6,000	2,645	7,050	6,630	1,640	2,060	5	5	1,500			

Note: These load capacities are based on the standard chassis without side shifter.



Doosan Industrial Vehicle Europe nv

Europark-Noord 36A
9100 Sint-Niklaas
Belgium

Tel.: +32 3 760 09 87
Fax: +32 3 760 09 89
Website: www.doosan-iv.eu

B20TX7-190412ENV3 (April 2019)

Authorized Dealer